

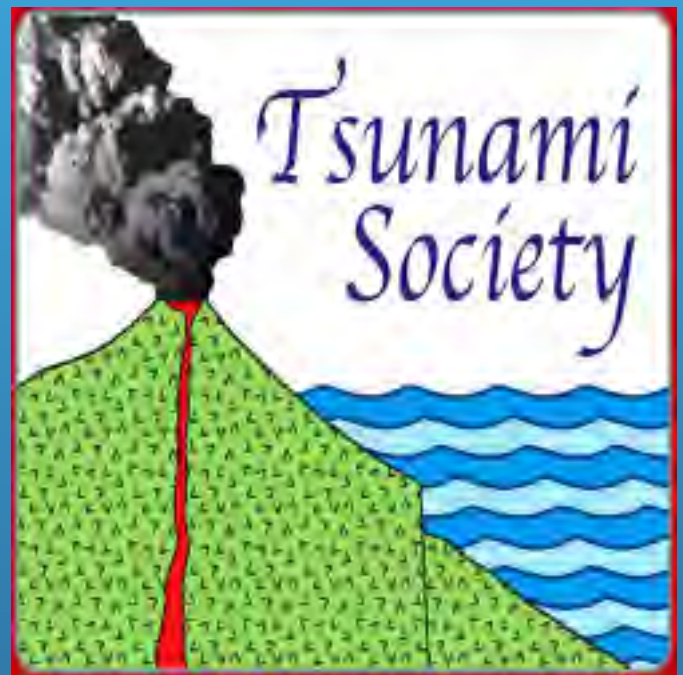


**2<sup>nd</sup> Announcement**

***7<sup>TH</sup> International Tsunami  
Symposium***

**Tsunami Society International  
12-15 September 2016**

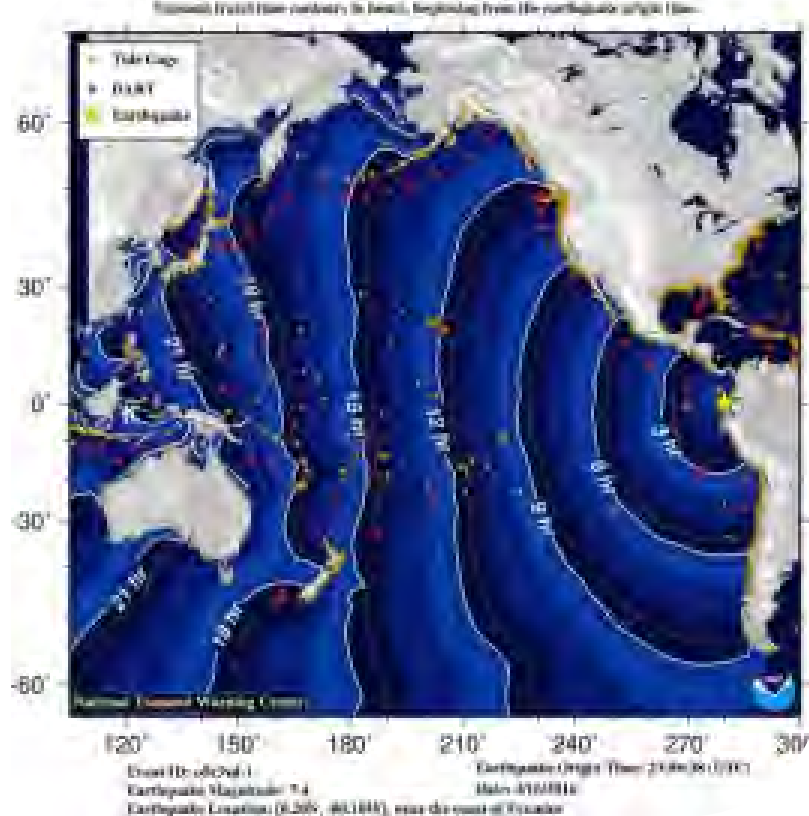
**ISPRA 2016 – ITALY**



**Joint Research Centre**

Hosted at the Joint Research Centre,  
European Commission, Ispra (VA)

## Tsunami Travel Times



### Call for Abstracts & Papers

You are invited to submit an abstract of a paper for an oral presentation at the 7<sup>th</sup> International Symposium of Tsunami Society International - to be held at the European Commission's Joint Research Centre (JRC) at Ispra, Italy (70 km north of Milan).

Upon acceptance of your abstract, you will be invited to submit a full paper for inclusion in the Symposium Proceedings.

### Theme - 7<sup>th</sup> International Tsunami Symposium

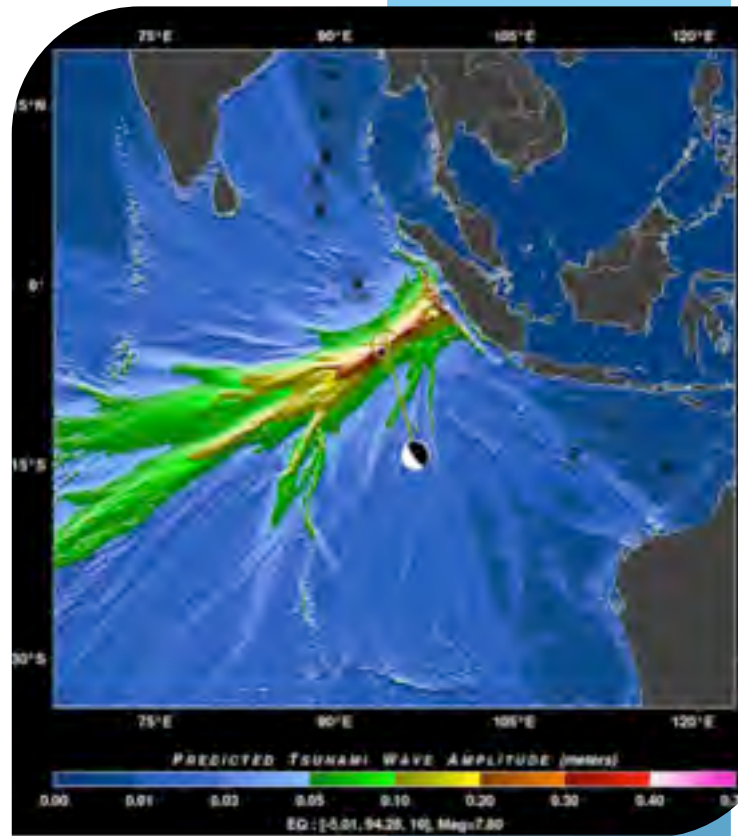
Integrative multidisciplinary approach in assessing tsunami hazards, in determining relative risks, in developing mitigation strategies for vulnerable regions and in establishing programs of public education and preparedness.

Please submit your abstract (max. 300 words) of your proposed presentation to:

[postmaster@tsunamisociety.org](mailto:postmaster@tsunamisociety.org) with a copy to [drgeorgepc@yahoo.com](mailto:drgeorgepc@yahoo.com)

Upon acceptance of your abstract by Tsunami Society International, please submit to the above given emails, a full paper in accordance to the prescribed format as it will be provided at the Society's website: <http://www.tsunamisociety.org>

The deadline for the submission of abstracts to Tsunami Society International is 1 July 2016 (Earlier submissions will be appreciated). The deadline for submissions of full, accepted papers (page limit up to 20) is 15 July, 2016. (See paper submission specifications at <http://www.tsunamisociety.org>)



### **TSUNAMI SYMPOSIUM TECHNICAL PROGRAM**

Although the Tsunami Symposium program has not been finalized, it is anticipated that it will include the following general sessions:

- Numerical Modeling
- Tsunami Preparedness
- Tsunami Instrumentation
- Experimental Modeling
- Landslide Generated Tsunamis
- Asteroid Generated Tsunamis
- Tsunami Source Mechanisms
- Risk Analysis
- Tsunami Engineering
- Historical Tsunamis
- General Session

### **RELEVANT TSUNAMI SYMPOSIUM TOPICS**

#### **Evaluation of the Tsunami Hazard / Risk Analysis.**

- Methods of Tsunami Risk Assessment
- Historical Studies of Tsunamis
- Tsunami Hazard Frequency
- Height/Frequency Relationships
- Recurrence Frequencies
- Acceptability of Risk

**The 17 April 2016 Earthquake and Tsunami in Ecuador**

The 28 April 2016 Earthquake off the Coast of Mexico

The 2 March 2016 Earthquake and Tsunami Southwest of Sumatra

The 16 September 2015 Earthquake and Tsunami off Central Chile

Revisiting the Great Japan Earthquake and Tsunami of March 2011

Further Surveys/Research Findings-Fukushima Daichi Nuclear Disaster  
Tsunami Engineering Considerations for Critical Facilities

**Tsunami Modeling Studies** -Hazard Modeling  
Hydraulic Scale Modeling Studies  
Numerical Modeling

#### Zonation of the Tsunami Hazard

Assessment of Socioeconomic  
Vulnerabilities and Impacts  
Infrastructure Development in the  
Coastal Zone/Land Use and Public Policy

#### Preparedness and Planning

Tsunami Hazard Management  
Tsunami Warning Systems  
Public Safety  
Protection of Property and Infrastructure  
Protection from Collateral and Health  
Impacts  
Post-disaster Recovery

#### SPECIAL SESSION - Tsunami Safety of Nuclear Power Plants

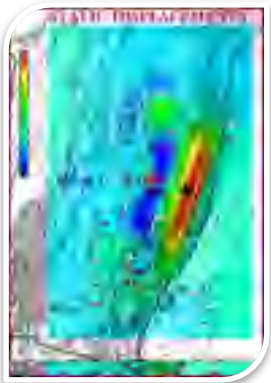
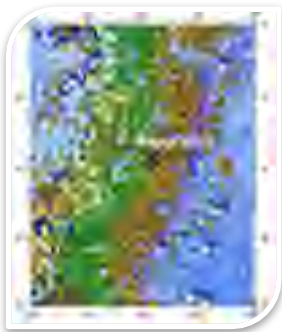
Tsunami Society International has invited  
experts familiar with the lessons learned  
from the nuclear power plant accidents  
and disasters (Fukushima Daichi 2011;  
Tamil Nandu 2004; Chernobyl 1983, etc),

to review the safety of nuclear power  
plants, and recommendations made  
during the 6<sup>th</sup> International Tsunami  
Symposium in Costa Rica in 2014.



## Oral Presentations

Oral presentations will be part of thematic sub sessions to be held over a three days' period (Monday, September 12 through Wednesday, September 14, 2016).



## Review Criteria for Acceptance Of Papers

1. Scientific quality and originality
2. Relevance to tsunami research and to tsunami disaster risk assessment
3. Generation of new ideas or concepts for tsunami disaster management and mitigation.
4. Proper syntax, grammar and clarity of figures (some editing for proper English may be provided).

## Paper Format

A link for instructions and a template for proper paper formatting will be provided at the portal page of Tsunami Society International website at <http://www.tsunamisociety.org>

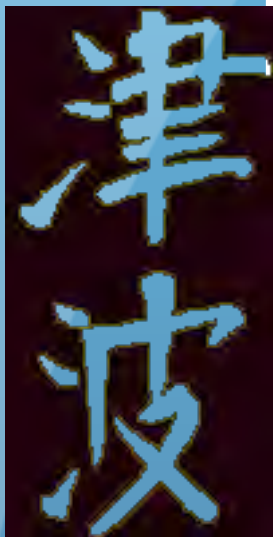
## ABOUT THE HOSTING INSTITUTION

### European Commission's Joint Research Centre (JRC)

The Joint Research Centre (JRC) is the European Commission's in-house science service. Its mission is to provide customer-driven scientific and technical support for the conception, development, implementation and monitoring of European Union policies. The JRC serves the common interest of the Member States, while being independent of special interests, whether private or national.

The JRC has seven scientific institutes, located at five different sites in Belgium, Germany, the Netherlands, Spain and Italy, with a wide range of laboratories and unique research facilities. The largest JRC site is located in Italy in Ispra, near Milan in a very beautiful area on the east coast of the Lake Maggiore in Northern Italy (see map for access).

Through its Institute for the Protection and Security of the Citizen (IPSC) the JRC develops methods and



technologies in support to crisis management operations.

### **The European Crisis Management Laboratory**

The European Crisis Management Laboratory, a Crisis Room model, was inaugurated on March 16, 2012 at the Joint Research Centre. The Laboratory acts as a research, development and test facility for ICT focused solutions which integrate devices, applications, and crisis management related to information sources to support crisis management needs, such as threats analysis, common situation awareness, and collaborative decision making.

The Laboratory also allows distributed crisis management training across relevant services of the European Commission, as well as with partners in the EU Member States and others engaged in crisis management, thereby enhancing their awareness and confidence in the application of technological solutions to strengthen their functions in crisis management.

The Laboratory has been tested in a variety of crisis scenarios ranging from intentional threats and natural disasters such as tsunamis, Tropical Cyclones to health crises.

The Laboratory has a central role during real emergencies when the analysis of complex events requires the use of several software components to give a unique picture of the ongoing events.

Following the 7<sup>th</sup> Tsunami Symposium, participants will have the option to visit in Brussels, Belgium, the European Commission Emergency Response and Coordination Center (ERCC) of DG ECHO.



## SYMPOSIUM LOGISTICS

### Registration

Preregistration for the 7<sup>th</sup> International Tsunami Symposium (ISPRA-2016) must be made upon submittal of papers by 15 July 2016 or before by contacting Tsunami Society International at [postmaster@tsunamisociety.org](mailto:postmaster@tsunamisociety.org)

Final registration can be made subsequently through Tsunami Society International by contacting [postmaster@tsunamisociety.org](mailto:postmaster@tsunamisociety.org) or between 8-9 AM, Monday morning, September 12, 2016 at a registration desk of the Symposium at the European Commission Joint Research Centre. The registration fee is discounted for members of the Tsunami Society International.

### Submission of Papers (pre-registration) and Registration Fees

Tsunami Society International Members: 375 €

Non-Members: 425 €

Students: 230 €

A Tsunami Society membership/publication form (available at the Society website) may be used to record name(s) of author(s) and title of the paper as well as the form of payment for either the publication fee or for final registration.

At the time of submission of an approved paper, a publication fee of 125 euros must be paid. In case of non-attendance, this fee is not refundable. The publication Fee will be deducted from the Registration fee of those attending. All payments in euros or in equivalent US Dollars may be paid to Tsunami Society by Credit Card or through Paypal by crediting the Tsunami Society account: [postmaster@tsunamisociety.org](mailto:postmaster@tsunamisociety.org)

### Registration with JRC for Security Clearance

"In order to access the JRC Ispra site, all Tsunami Symposium participants need to register at a dedicated website at least four (4) weeks before the Tsunami Symposium - specifically no later than August 12, 2016. The address of the registration application is

<https://web.jrc.ec.europa.eu/rem/>

Participants need to create an account, select "Ispra" and then "September" in the top menu, then select the 7th Tsunami Symposium of Tsunami Society International (is not yet present), fill their data.

Also participants need to indicate their transport and accommodation needs.

## Proceedings

Tsunami Society International will handle the collections of abstracts, and preregistration at the time full papers are submitted and final registration of participants will be on Monday morning (Between 8-9 AM), September 13, 2016 at the entrance of the designated Amphitheatre of the ISPRA facility.

## Venue of Tsunami Symposium

The 3-day Tsunami Symposium will be held at Amphitheatre of the JRC in Ispra. The Amphitheater can accommodate a large number of participants + a chair table for 6 persons, is equipped with WiFi and microphones on the table, plus a lavalier - and handheld wireless microphone. The content of the symposium may be live streamed and the recordings stored.

## Field Trip

Following the Symposium in Ispra on 15 September 2016, an optional field trip (with cost not included in the registration fee) is being coordinated for participants to view the facilities of the European Emergency Response Co-ordination Centre (ERCC) in Brussels, Belgium, which is operating within the European Commission's Humanitarian Aid and Civil Protection department (DG-ECHO). The flight from Milano Malpensa to Brussels has a cost between 50 and 110 euro depending on the company and the time of reservation. The flight ticket should be purchased autonomously by the participants by selecting an evening flight on the 14 Sept or an early flight on the 15th (6:30 am Easyjet, 8:35 AM Brussels Airlines<sup>1</sup>) to be at about 11:30 at ERCC premises. Further details will be provided to participants that intend to perform the visit.

## Visas

Sometimes, Visa applications may take time due to security reasons. In addition, the Schengen Act requires that when one EU Member state is asked for a Visa, it is like all of the EU members states are being asked - therefore Italy will have to notify all the member states of the Schengen area. This means that the participants will have to apply in advance for their Visas (if needed) - thus you are being urged to apply as early as possible and at least six weeks before the 7<sup>th</sup> International Tsunami Symposium.

## Travel

The closest airport to the EC-JRC is Milan's Malpensa. The distance from the Malpensa Milan Airport to Ispra is 30 km (40 min.)

---

<sup>1</sup> Current cost is about 38 euro for both flights as of May 2016 but the cost increases approaching the departure date; so if you intend to join the visit it is best to reserve as soon as possible



## Local Transportation

Transportation will be provided to Tsunami Symposium participants from the Malpensa, Milan Airport to their hotel. Also, transportation will be provided to and from the hotel to the Symposium site. Additionally, transportation will be provided to participants and their spouses by bus to a restaurant for a group dinner, tentatively scheduled for Wednesday evening, September 14, 2016.

**Arriving by car:** For all directions it is recommended that you follow the Autostrada Laghi (A8). After leaving the highway (exit: Sesto Calende, Laveno) follow the Superstrada towards Besozzo and Laveno. When on the Superstrada, turn left at the seventh traffic light (after 7km) towards Cadrezzate and Ispra and follow the traffic signs for CCR (Centro Comune di Ricerca). After some narrow curves, the road will get you right to the Centre entrance.

**Arriving by plane:** Milan has 2 international airports: Linate and Malpensa. Allow at least one hour of travel time from Linate and 30 minutes from Malpensa. In both cases - the quickest option in getting to the Centre at Ispra - is to rent a car.

**Arriving by train:** The major train stations are Milano Centrale and Arona. In both cases - the quickest option in getting to the Centre - is to rent a car.

**Transport** Transports between Malpensa Airport (Milan) to the Hotel(s) and to the Joint Research Centre will be handled by transport service for participants registered with Tsunami Society International (attending the 7<sup>th</sup> Tsunami Symposium. Upon reception of the participants' travel plans, bus shuttle will be arranged from Malpensa (Milano)-Airport to the hotel in Varese and to the JRC in Ispra.

It is not known yet if there will be one large bus or several small buses. Transportation will also be arranged every day between the hotel and the JRC conference facility. A schedule will be provided to participants at a later time.

## Hotel Accommodations

Arrangements are being made to block accommodation for all participants at a large and nice hotel in Varese, at a reasonable price of 95 euros per night)+20 euro for double). The same hotel will probably be used for the social dinner.

JRC will provide free transportation daily to/from Varese.

The selected hotel is: ATA Hotel Varese, Via Albani, Varese

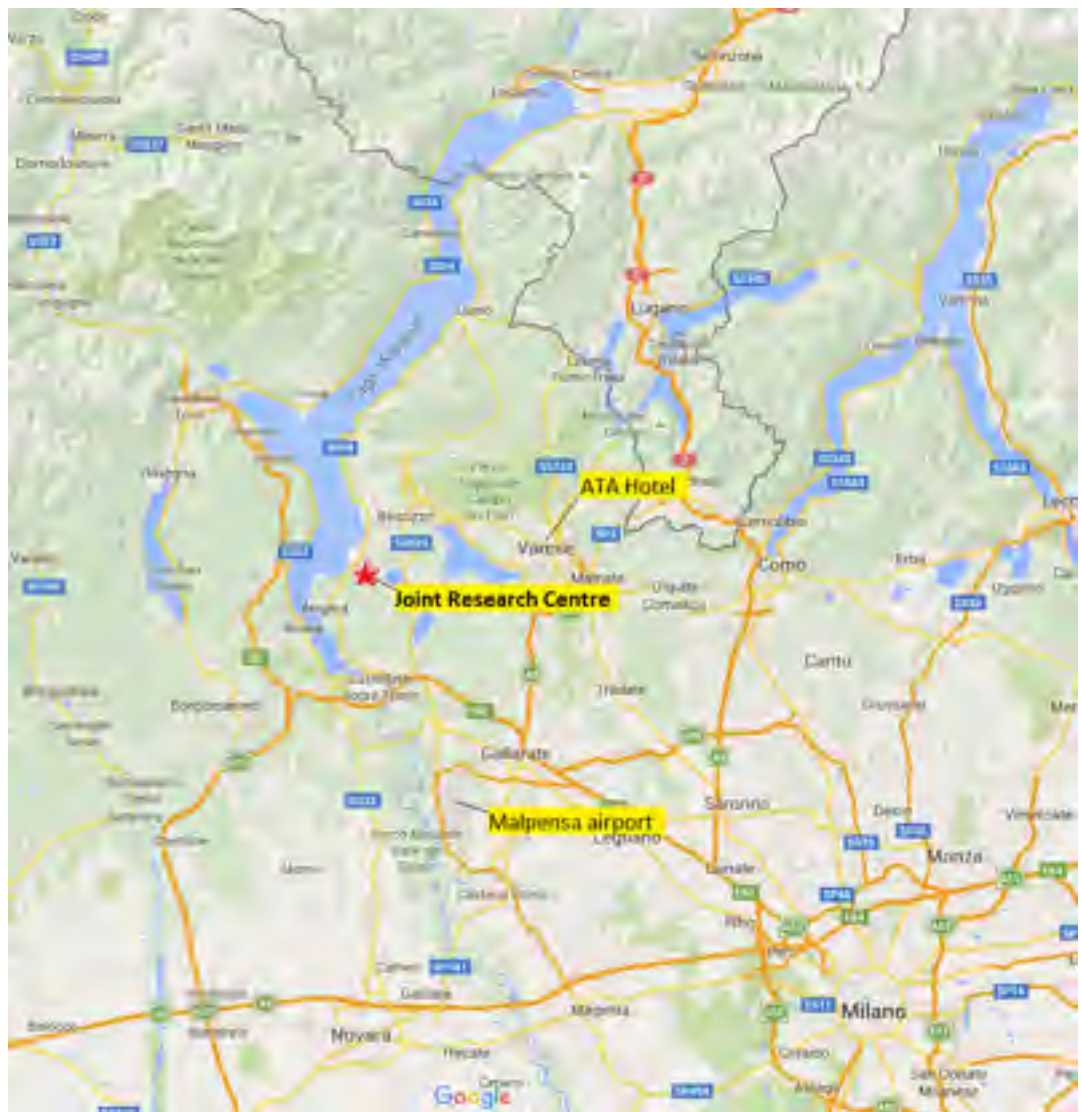
<http://www.atahotels.it/en/varese>

## Dinner/Banquet

A dinner is being planned for Symposium participants and their spouses for Tuesday evening, September 13, at the hotel in Varese. Also planned for that evening is a brief Tsunami Awards ceremony.

## Attractions in the Area

**Ispra** is a commune and small town on the eastern shore of Lake Maggiore, in the province of Varese (Lombardy, northern Italy). It is a very attractive and interesting destination - not only to hold meetings but to visit as well. The EC-Joint Research Centre is also very close to Milan and other interesting places. September is a very nice period to be in Northern Italy. After the Symposium, there may be a lot of additional attractions for participants and their spouses to visit. A list of attractions in the area will be provided at registration.



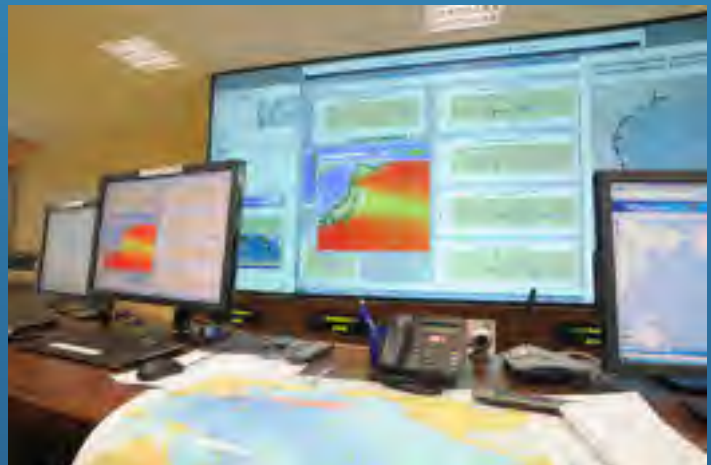


# 7<sup>th</sup> International Tsunami Symposium

## ISPRA - 2016

### TSUNAMI SOCIETY INTERNATIONAL

#### 12 – 15 September 2016



Joint Research Centre  
<http://www.jrc.ec.europa.eu>  
email: [alessandro.annunziato@jrc.ec.europa.eu](mailto:alessandro.annunziato@jrc.ec.europa.eu)

#### TSUNAMI SOCIETY INTERNATIONAL

1741 Ala Moana Blvd. #70  
HONOLULU, HAWAII 96815, USA

For more information contact

[postmaster@tsunamisociety.org](mailto:postmaster@tsunamisociety.org) and  
[drgeorgenc@yahoo.com](mailto:drgeorgenc@yahoo.com)

